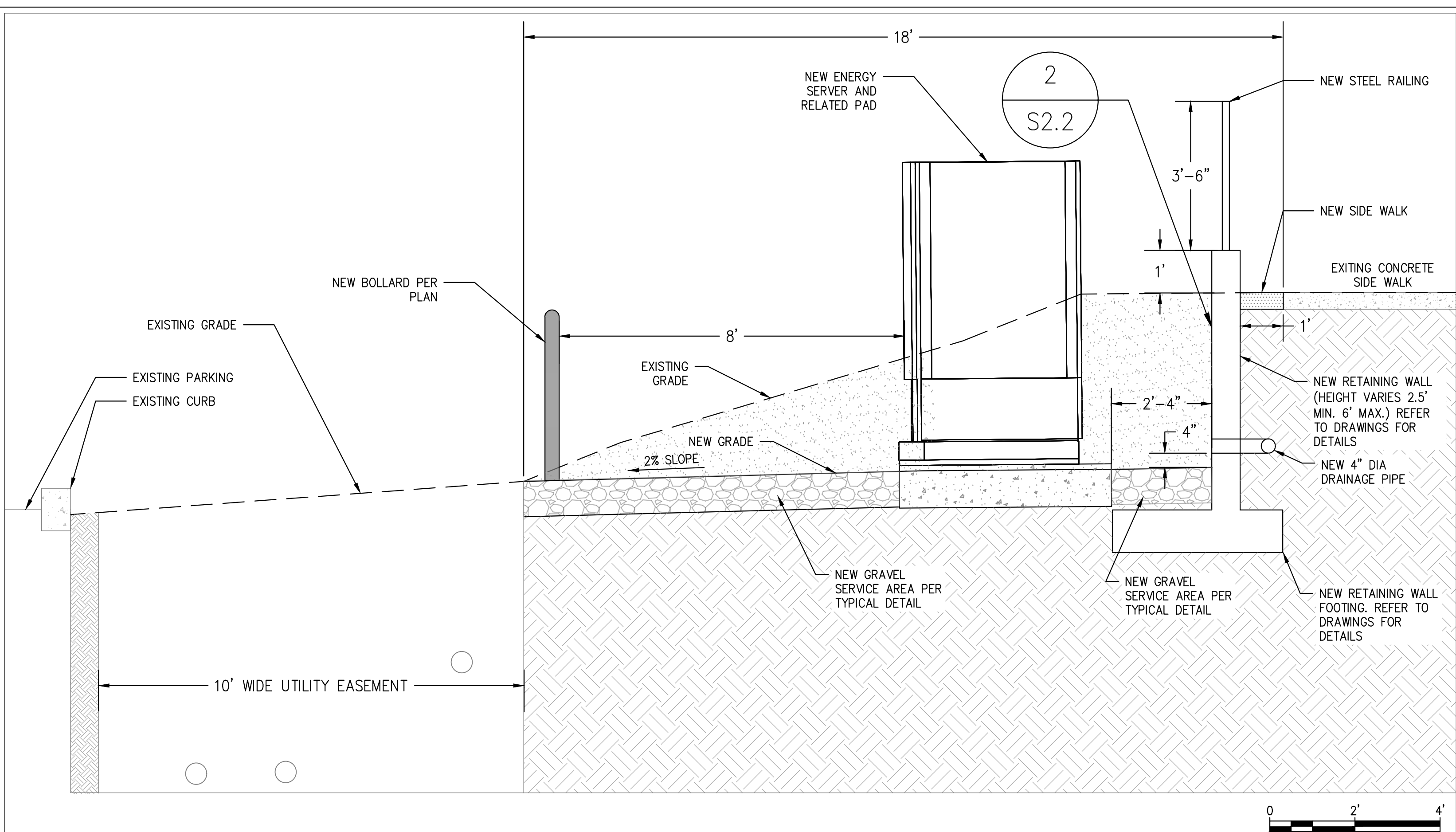
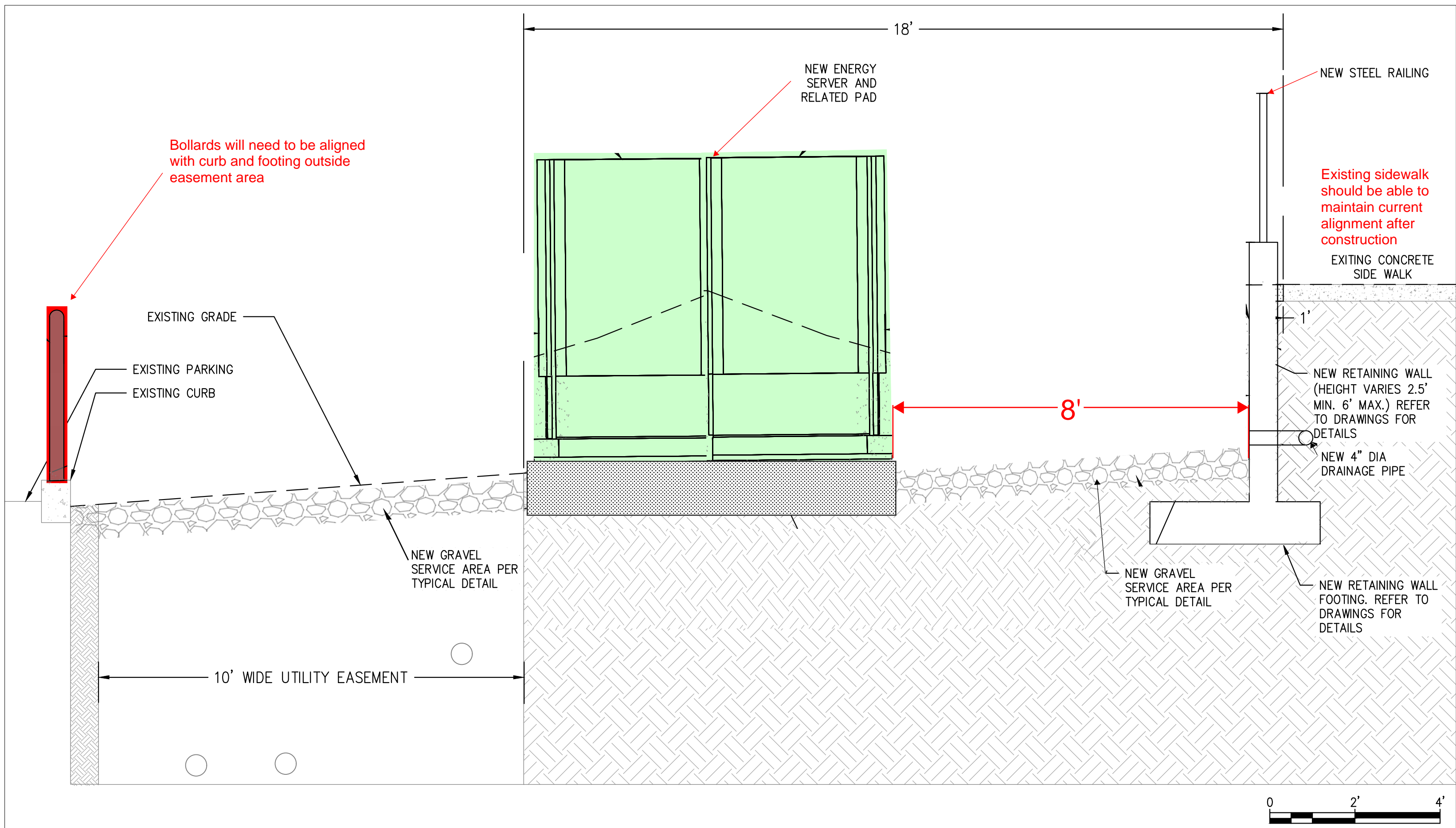


**Current Design**  
 DETAILED SITE PLAN  
 SCALE: 1" = 10'

**Proposed Design**  
 1  
 G2.0



**Current Design**



**Proposed Design**

CROSS SECTION VIEW  
 SCALE: 1" = 2'  
 2  
 G2.0

**Bloomenergy**  
 4353 N 1ST STREET  
 SAN JOSE, CA 95134  
 PROPRIETARY AND CONFIDENTIAL  
 BLOOM ENERGY CORPORATION ALL RIGHTS RESERVED. THIS DOCUMENT IS FOR REFERENCE ONLY AND MAY NOT BE USED WITHOUT THE WRITTEN PERMISSION OF BLOOM ENERGY. ANY REPRODUCTION IN PART OR AS A WHOLE WITHOUT PERMISSION OF BLOOM ENERGY IS PROHIBITED.

**EBI Consulting**  
 environmental | engineering | due diligence  
 1501 QUAIL STREET #110  
 NEWPORT BEACH, CA 92660  
 t: (781) 273-2500

ENGINEER OF RECORD  
 ANTHONY E. FARMAND, PE  
 LICENSE #C62595

CUSTOMER SITE  
 ENLOE MEDICAL CENTER  
 1531 ESPLANADE  
 CHICO, CA 95926



REVISION HISTORY		
REV	REVISION ISSUE	DATE
-	INITIAL RELEASE	03/25/2020
1	REVISION PER PLAN REVIEW	03/31/2020

DESIGNED BY CARSON TURNER  
 DRAWN BY CHAYA VIJAY  
 REVIEWED BY CARSON TURNER  
 APPROVED BY EBI CONSULTING

SHEET TITLE  
 SECTION DETAIL  
 DRAWING NUMBER  
 G2.0  
 BLOOM DOCUMENT  
 DOC-1012061  
 THIS DRAWING IS 24" X 36" AT FULL SIZE  
 SITE ID: ENL000.0 SHEET 04 OF 20